



**Hart & Cooley**<sup>®</sup>  
*install confidence*

# Duct system components



Edition 1

# Contents

**INTRODUCTION** .....2

**DAMPERS**

**FIRE DAMPERS**

Model Summary .....3  
 Reference Guide .....4  
 75 Fire Damper - 1.5-hour rated .....5  
 85 Thinline Fire Damper - 1.5-hour rated .....5  
 95 Thinline Vertical Fire Damper - 3-hour rated .....5  
 105 Vertical Fire Damper - 3-hour rated .....5  
 How to Specify Fire Dampers .....6  
 How to Specify Fire Dampers with Sleeves .....6  
 How to Specify Retaining Angle for Sleeves .....6

**CEILING RADIATION DAMPERS**

Reference Guide .....7  
 SCRD Ceiling Radiation Damper (square or rectangular) .....8  
 RCRD Ceiling Radiation Damper (round) .....8  
 How to Specify Ceiling Radiation Dampers .....9  
 CRD Boot .....10  
 How to Specify CRDs with Boots .....10

**DUCT COMPONENTS**

**ACCESS DOORS**

6110 Flat .....11  
 6120 Oval .....11  
 6130 Spin-in .....11  
 6140 Hinged .....12  
 6150 Cammed .....12

**DUCT CONNECTORS**

KC Keating Koupling—Round Oval Duct .....13  
 ZF Zip Flange Duct Connector—Round/Oval Duct .....13  
 QC Quick Connect—Round Duct .....13  
 STS Standing S—Rectangular Duct .....14  
 STD Standing Drive—Rectangular Duct .....14  
 T6 Slip—Rectangular Duct .....14  
 T1 Drive—Rectangular Duct .....14  
 FC Flexible Connectors—Rectangular Duct .....15

**DUCT ACCESSORIES**

**VANE AND RAIL**

VN Vane .....16  
 RA Rail .....16

**HANGERS AND STRAPPING**

TR Trapeze .....17  
 SA Slotted Angle .....17

PAG Punched Angle .....17  
 HS Hanger Strap .....17  
 TRD Threaded Rod .....18

**HARDWARE**

RDL Rod Lock .....18  
 TKS Tek Screws .....18

**DAMPER / REGULATOR ACCESSORIES**

65/66 Damper Set .....19  
 607/608 Damper Set .....19  
 506/507/508 Damper Set .....19  
 60-3/8 Regulator Set .....19  
 56-3/8 Regulator Set .....19  
 80-3/8 Regulator Set .....19  
 69 Regulator Set .....20  
 70 Regulator Set 704 Washer, 705 Handle, 706 Wing Nut, 708 5/16" Bearings .....20  
 102 Damper Tip .....20  
 2 Casing Clip .....20  
 27 Casing Clip .....20

**MISCELLANEOUS**

AD Aluminum Opposed-Blade Damper .....21  
 Ducturns .....21  
 DT Air Diverter .....21  
 FT Flexiturn .....21

**SEALANTS AND ADHESIVES**

**GASKET**

BUGA Butyl Gasket Tape .....22  
 NEGA Neoprene Gasket Tape .....22

**SEALANTS**

SS Solvent Based Sealer .....22  
 SSF Water Based Sealer, Fiber .....22  
 SSNF Water Based Sealer, Non Fiber .....22  
 BUS Butyl Sealant .....22

**ADHESIVES**

ADR Roller Type Adhesive .....22  
 ADS Spray Type Adhesive .....22  
 SL Silicon .....22

Hart & Cooley, Inc. introduces a new segment of accessories that complements our other products that you have known for more than 100 years. Duct System Components is a line of products that serves the sheet metal, insulation, heating, and air conditioning industry. Hart & Cooley offers a wide range of products to service the sheet metal contractor. In addition, these products offer timesaving features, as well as the quality that you have come to know from Hart & Cooley.

Products included in this new offering are Fire Dampers, Ceiling Radiation Dampers, Access Doors, Vane, Rail, Slips and Drive, as well as a wide range of gaskets, adhesives and sealants. These products are natural extensions of the existing line of Hart & Cooley products you are using today.

# Model Summary—Fire Dampers

## Model Summary

Model	Hour Rating	Side Profile	Damper Orientation	Configuration
75 Series	1.5-hour	Wide (4-1/4")	H and V	A, B, and C
85 Series	1.5-hour	Thinline (2")	H and V	A, B, and C
95 Series	3-hour	Thinline (2")	V	A, B, and C
105 Series	3-hour	Wide (4-1/4")	V	A, B, and C

## IMPORTANT FACTS

Hart & Cooley fire dampers are undersized 1/4" at the factory (size minus 1/4").

### ■ Fire Damper Sleeves

A fire damper sleeve is a rectangular piece of galvanized sheet metal (usually the same gauge as the ductwork or heavier) that is wrapped around the damper in order to meet the requirements of national codes. The damper sleeve serves two functions. In many cases it provides a fastening site for the ductwork on either side of the damper. Secondly, a damper sleeve acts as a platform to attach the retaining angle. The damper and sleeve are sized slightly smaller than the opening in the barrier to ensure proper damper operation during the expansion that comes with changing temperatures.



Fire damper sleeves are available in 8"-20" lengths (4" increments) and gauges 14-22. It should be noted that a damper sleeve might not be required if the side profile of the fire damper is wide enough to accommodate retaining angles on either side of the barrier.

### ■ Retaining Angles

Retaining angles attach to the fire damper sleeve on either side of the barrier (wall or floor) for the purpose of securing the damper in place. The retaining angles frame the damper on each side to secure it in position in the barrier and to cover the gap between the damper (or damper sleeve) and the hole in the barrier.

### ■ Fusible Links

165°F link is standard. To order 212°F or 286°F link, specify at the time of order.

### ■ Listed to Underwriters Laboratories Standard 555

This Product is Listed by  
**UNDERWRITERS LABORATORIES INC.**  
 and Bears the Mark:



## Fire Damper Models

### 75 Series

- 1.5-hour fire rating
- Used in barriers rated at 2 hours or less
- Has a 4-1/4" side profile
- 165°F fusible link standard (212°F and 286°F also available)
- Available in both horizontal (H) and vertical (V) damper orientations
- Available in A, B, & C type configurations

### 85 Series (Thinline)

- 1.5-hour fire rating
- Used in barriers rated at 2 hours or less
- Has a 2" side profile
- 165°F fusible link standard (212°F and 286°F also available)
- Available in both horizontal (H) and vertical (V) damper orientations
- Available in A, B, & C type configurations

### 95 Series (Thinline)

- 3.0-hour fire rating
- Used in barriers rated at 4 hours or less
- Has a 2" side profile
- 165°F fusible link standard (212°F and 286°F also available)
- Available in vertical (V) damper orientation only
- Available in A, B, & C type configurations

### 105 Series

- 3.0-hour fire rating
- Used in barriers rated at 4 hours or less
- Has a 4-1/4" side profile
- 165°F fusible link standard (212°F and 286°F also available)
- Available in vertical (V) damper orientation only
- Available in A, B, & C type configurations

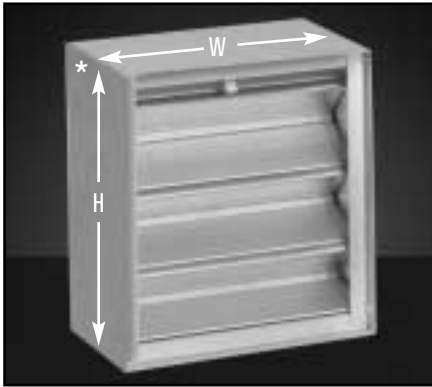
### Damper Orientation Guide

- H – Horizontal
- V – Vertical

### Configuration Reference Guide

- A – Damper blades and the damper frame are in the air stream.
- B – Damper blades are out of the air stream but the damper frame is in the air stream.
- C – Damper blades and damper frame are both removed from the air stream. The "C" configuration requires the damper to be fitted with a collar that will correspond to the type of duct being used in the project.
  - Q – Designates an oval collar for use with oval ductwork.
  - R – Designates a rectangular collar for use with flat ductwork.
  - C – Designates a round collar for use with round ductwork.

# Fire Dampers



## 75 Series

- UL 555 approved with a 1.5-hour fire rating
- Used in barriers rated at 2 hours or less
- 4-1/4" side profile
- Single-piece galvanized steel frame
- 165-degree fusible link standard (212- and 286- degree available)
- Maximum single unit size: 60" x 60"
- Maximum multiple section units up to 120" x 120" - vertical orientation  
102" x 60" - horizontal orientation

## Models Available

75VA  
75VB  
75VC  
75VO  
75VR  
75HA  
75HB  
75HC  
75HO  
75HR



## 85 Series (Thinline)

- UL 555 approved with a 1.5-hour fire rating
- Used in barriers rated at 2 hours or less
- 2" side profile
- Single-piece galvanized steel frame
- 165-degree fusible link standard (212- and 286- degree available)
- Maximum single unit size up to:
  - vertical - 41" x 36" or 36" x 60"
  - horizontal - 41" x 36"
- Multiple section units not available

## Models Available

85VA  
85VB  
85VC  
85HA  
85HB  
85HC



## 95 Series (Thinline)

- UL 555 approved with a 3-hour fire rating
- Used in barriers rated at 4 hours or less
- 2" side profile
- Single-piece galvanized steel frame
- 165-degree fusible link standard (212- and 286- degree available)
- Vertical orientation only
- Maximum single unit size up to 48" x 49"
- Multiple section units not available

## Models Available

95VA  
95VB  
95VC



## 105 Series

- UL 555 approved with a 3-hour fire rating
- Used in barriers rated at 4 hours or less
- 4-1/4" side profile
- Single-piece galvanized steel frame
- 165-degree fusible link standard (212- and 286- degree available)
- Vertical orientation only
- Maximum single unit size up to 60" x 48"
- Multiple section units not available

## Models Available

105VA  
105VB  
105VC  
105VO  
105VR

\* Please note: The width dimension is always the blade width



### How to Specify Fire Dampers:

**Fire Damper Model**

75 - 75 Series  
85 - 85 Series  
95 - 95 Series  
105 - 105 Series

**Orientation**

VA - Vertical A  
VB - Vertical B  
VC - Vertical C  
VO - Vertical CO  
VR - Vertical CR  
HA - Horizontal A  
HB - Horizontal B  
HC - Horizontal C  
HO - Horizontal CO  
HR - Horizontal CR

**Fusible Link**

1 - 165°F  
2 - 212°F  
3 - 286°F

**Size: W x H or Collar Diameter**

20x20 - 20" w x 20" h Duct  
8 - 8" Diameter Duct  
(for "C" style fire dampers)

**Examples of How to Specify:**

- 1) 75 VB 2 14X10 = Fire Damper; Model 75; Vertical Type B; 212°F Fusible Link; Sized for 14"(w) x 10"(h) Duct
- 2) 85 HC 1 16 = Fire Damper; Model 85; Horizontal Type C; 165°F Fusible Link; Sized for 16" Diameter Duct

### How to Specify Fire Dampers with Sleeves:

**Fire Damper Model**

75 - 75 Series  
85 - 85 Series  
95 - 95 Series  
105 - 105 Series

**Orientation**

VA - Vertical A  
VB - Vertical B  
VC - Vertical C  
VO - Vertical CO  
VR - Vertical CR  
HA - Horizontal A  
HB - Horizontal B  
HC - Horizontal C  
HO - Horizontal CO  
HR - Horizontal CR

**Fusible Link**

1 - 165°F  
2 - 212°F  
3 - 286°F

**Size: W x H or Collar Diameter**

20x20 - 20" w x 20" h Duct  
8 - 8" Diameter Duct  
(for "C" style fire dampers)

**Specify "S" Sleeve**

S - Sleeve

**Sleeve Gauge (14-22)**

14 - 14 Gauge  
16 - 16 Gauge  
18 - 18 Gauge  
20 - 20 Gauge  
22 - 22 Gauge

**Sleeve Length**

8 - 8" Sleeve  
12 - 12" Sleeve  
16 - 16" Sleeve  
20 - 20" Sleeve

**Examples of How to Specify:**

- 1) 75 VA 2 10X10 S 12 18 = Model 75; Vertical Type A Fire Damper; 212°F Fusible Link; Sized for 10"(w) x 10"(h) Duct; With 18 Gauge/12" Sleeve
- 2) 85 HC 1 10 S 20 14 = Model 85; Horizontal Type C Fire Damper (round collar); 165°F Fusible Link; Sized for 8" Diameter Duct; With 14 Gauge/20" Sleeve

### How to Specify Retaining Angle for Sleeves:

**Fire Damper Model**

75 - 75 Series  
85 - 85 Series  
95 - 95 Series  
105 - 105 Series

**Orientation**

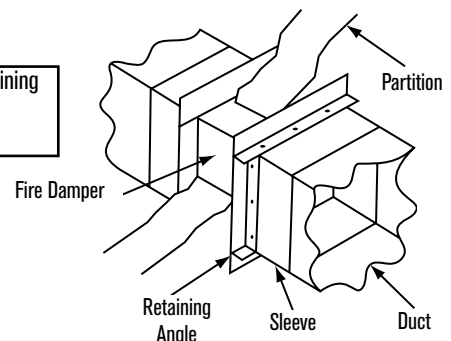
VA - Vertical A  
VB - Vertical B  
VC - Vertical C  
VO - Vertical CO  
VR - Vertical CR  
HA - Horizontal A  
HB - Horizontal B  
HC - Horizontal C  
HO - Horizontal CO  
HR - Horizontal CR

**Damper Size (W x H)**

**Examples:**  
24 24 (24" w x 24" h)  
36 16 (36" w x 16" h)  
48 40 (48" w x 40" h)

**Suffix**

"RA" (specifies Retaining Angle)



**Examples of How to Specify:**

- 1) 75HA 24 24 RA = Retaining Angle for a Model 75 Horizontal Type A Fire Damper; Sized for 24"(w) x 24"(h) Sleeve (8 pcs. total)
- 2) 95VC 36 16 RA = Retaining Angle for a Model 95 Vertical Type C Fire Damper; Sized for 36"(w) x 16"(h) Sleeve (8 pcs. total)

# Ceiling Radiation Damper Reference Guide

## Ceiling Radiation Damper (CRD) Models

### "S" Series—Square and Rectangular

#### Model SCRDSB

- Single-blade damper
- Great for smaller sized dampers where maximizing airflow is essential
- Rectangular
- Available in 8" x 4", 10" x 4", and 12" x 4" only
- 165°F fusible link standard (212°F also available)
- Available with easy access hook and catch only

#### Model SCRDDB

- Double-blade damper, arranged in a butterfly configuration
- Square or rectangular
- Minimum size – 4" x 4"
- Maximum size – 24" x 24"
- 165°F fusible link standard (212°F also available)
- Available with easy access hook and catch or link plate

### "R" Series—Round

#### Model RCRDDB

- Double-blade damper, arranged in a butterfly configuration
- Round
- Sizes range from 4" to 24" diameter
- 165°F fusible link standard (212°F also available)
- Available with easy access hook and catch or link plate

#### Model Prefix

- S – Square/Rectangular
- R – Round

#### Damper Style

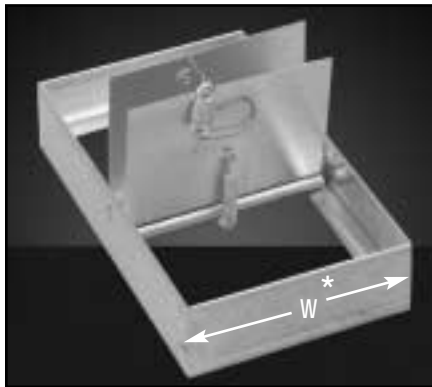
- SB – Single Blade (8" x 4", 10" x 4", and 12" x 4" only)
- DB – Double Blade

#### Easy Access Suffix

- LP – Link plate
- EA – Easy access

The easy access feature allows for "easy access" to reset the damper.





Easy Access Shown  
Even Inch Increments Standard

## S Series Model CRD Square and Rectangular Ceiling Radiation Dampers

- UL 555C approved with a 3-hour fire rating
- Single-piece galvanized steel frame

### SCRDSB EA

- Available as 8" x 4", 10" x 4", and 12" x 4" only

### SCRDDB LP

- Minimum size - 4" x 4"
- Maximum size - 24" x 24"

### SCRDDB EA

- Minimum size - 4" x 4"
- Maximum size - 24" x 24"

\*Width dimension (given first) is always the hinge direction.

## Models Available

SCRDSB EA  
(single blade)

SCRDDB LP  
(double blade, link plate)

SCRDDB EA  
(double blade, easy access)



Link Plate Shown  
Even Inch Increments Standard

## R Series Model CRD Round Ceiling Radiation Dampers

- UL 555C approved with a 3-hour fire rating
- Single-piece galvanized steel frame

### RCRDDB LP

- Minimum size - 4" dia
- Maximum size - 24" dia

### RCRDDB EA

- Minimum size - 4" dia
- Maximum size - 24" dia

## Models Available

RCRDDB LP  
(double blade, link plate)

RCRDDB EA  
(double blade, easy access)

## IMPORTANT FACTS

### ■ CRD Boots

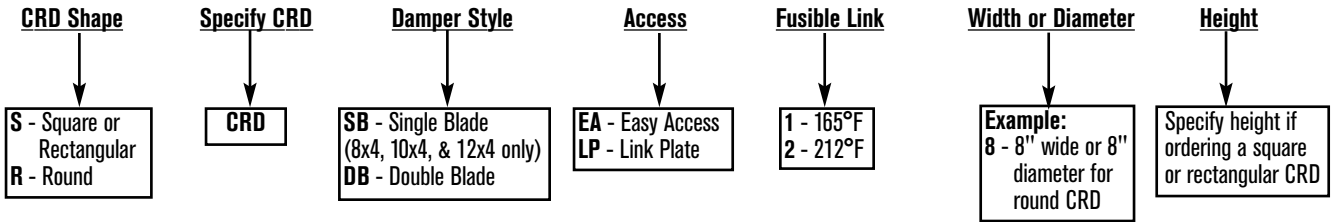
Boot option available. See page 10.

### ■ Fusible Links

165°F link is standard. To order 212°F link, specify at the time of order.

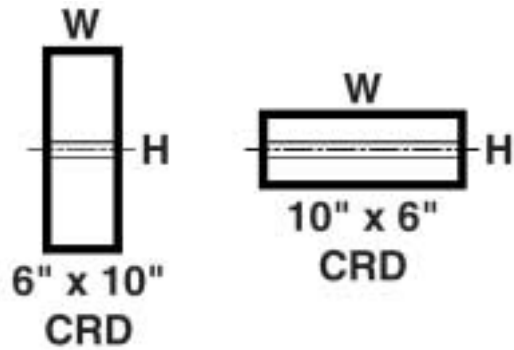
# Specifying

## How to Specify CRDs:



### Examples of How to Specify CRDs:

- 1) **S CRD DB EA 1 10 6** = Rectangular CRD; Double Blade; Easy Access; 165°F Fusible Link; Size: 10" (w) x 6" (h)
- 2) **R CRD DB LP 2 16** = Round CRD; Double Blade; Link Plate; 212°F Fusible Link; Size: 16" Diameter

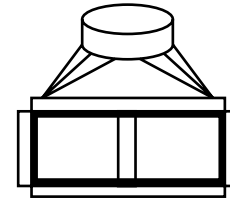


# Ceiling Radiation Dampers with Boot

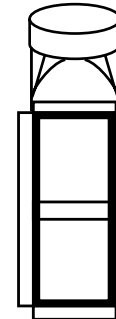


## CRD Boot

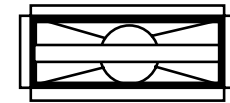
- Available in the following styles:
  - End boot
  - Elbow (90° boot)
  - Straight boot
- Available in collars ranging from 4" to 10"
- Available with a 4", 6" or 8" throat
- Available with or without a flange
- Contact factory for availability of other sizes or styles
- Factory assembled to ensure proper fit and placement
- Eliminates the need for labor to install in the field



90° Boot

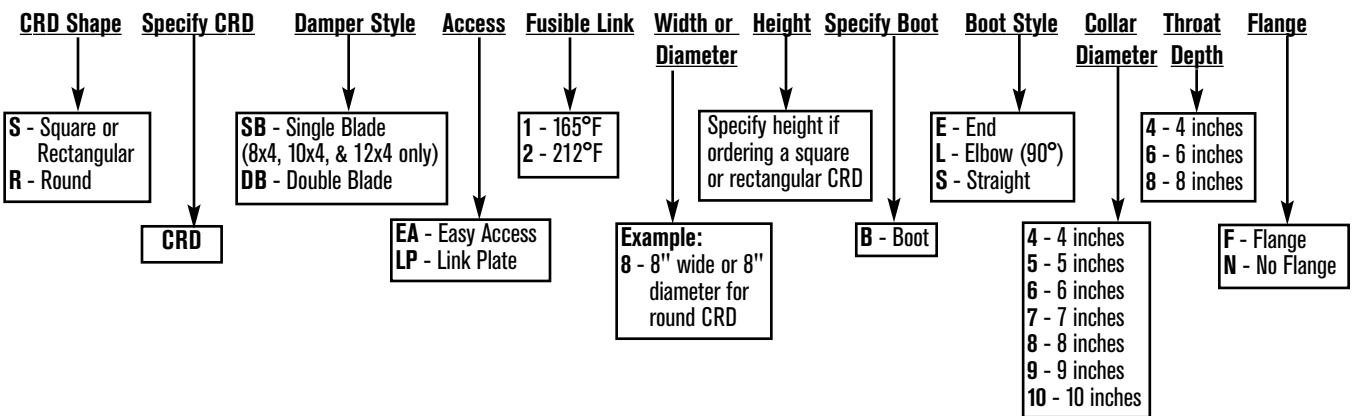


End Boot



Straight Boot

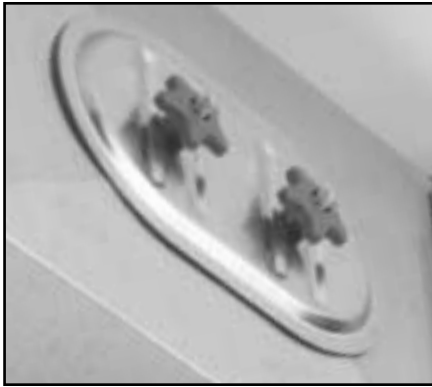
## How to Specify CRDs with Boots:



### Examples of How to Specify (space required between each component):

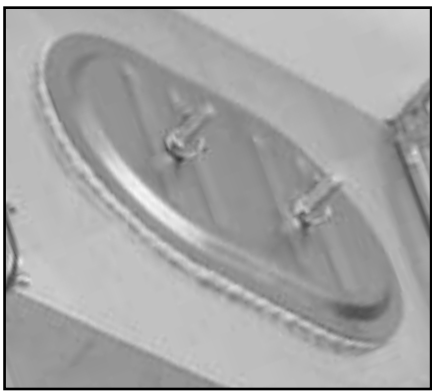
- 1) **S CRD DB LP 1 12 8 B L 8 6 F** = Square CRD; Double Blade with Link Plate; 165°F Fusible Link; 12"(w) x 8"(h); With 90° Elbow Boot; Collar: 8" diameter; Throat: 6" depth; With Flange
- 2) **S CRD SB LP 2 10 4 B E 6 6 N** = Square CRD; Single Blade with Link Plate; 212°F Fusible Link; 10"(w) x 4"(h); With End Boot; Collar: 6" diameter; Throat: 6" depth; No Flange

# Access Doors



## Model 6110 Flat Access Door (Sandwich Style)

- Provides access to sheet metal ductwork for resetting dampers, cleaning filters or general maintenance
- Available in galvanized, stainless and aluminum
- Extremely low leakage at a wide range of pressures
- Provided with an adhesive installation template
- Available in 10" x 6" and 16" x 12" for square and rectangle duct only
- Specify single- or double-wall duct



## Model 6110 Flat Access Door (Sandwich Style, High Temp.)

- Provides access to sheet metal ductwork for resetting dampers, cleaning filters or general maintenance
- Constructed from Black Iron material with woven ceramic fiber gasket
- Good for temperatures up to 2000 degrees F
- Provided with an adhesive installation template
- Available in 10" x 6" and 16" x 12" for square and rectangle duct only



## Model 6120 Oval Access Door (Sandwich Style)

- Provides access to round or oval duct systems for resetting dampers, cleaning filters or general maintenance
- Available in galvanized, stainless, aluminum or black iron
- For single- and double-wall pipe
- Available for high-temperature applications
- Available sizes:
  - 1) 10" x 6" for duct with 6" - 30" diameter (must specify diameter)
  - 2) 16" x 12" for duct with 18" - 60" diameter (must specify diameter)



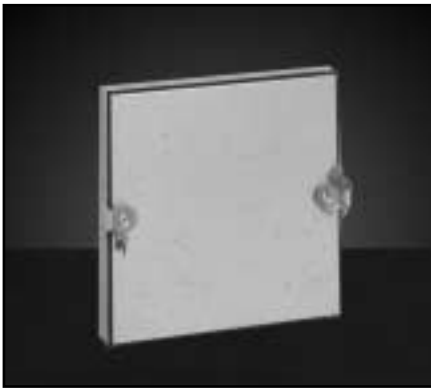
## Model 6130 Spin-in Access Door

- Tested to 20" S.P. with minimal leakage
- Available for single-wall duct applications
- Available in 8", 10", 12", 18" and 24" diameters



## Model 6140 Hinged Access Door Square

- Provides access to sheet metal ductwork
- Access door is hinged to frame
- Insulated door to ensure peak performance and efficiency
- For use in low-pressure systems (1-4.5" W.C.)
- Available in 6" x 6" through 24" x 24"



## Model 6150 Cammed Access Door Square

- Provides access to sheet metal ductwork
- Access door is removable and is attached with cam latches to frame
- Insulated door to ensure peak performance and efficiency
- For use in low pressure systems (1-4.5" W.C.)
- Available in 6" x 6" through 24" x 24"

# Duct Connectors



## Model KC Keating Koupling

- Patent #5,213,374
- Used to connect 2 pieces of round or oval ductwork
- Provides double "S" connection
- 20 ga galvanized steel
- Self-sealing
- Integral sealant pocket produces airtight seal
- Tested at pressures over 10" W.C.
- Available in 10" through 30" diameters for round and most standard oval ductwork sizes



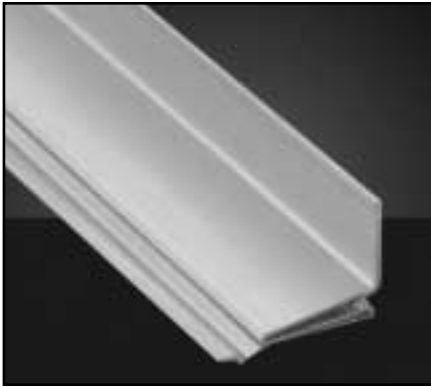
## Model ZF Zip Flange Duct Connector

- Provides a simple butt type connection
- Acts as a reinforcement at the duct connection
- Adapts to minor variations in the pipe diameter
- Constructed from galvanized material



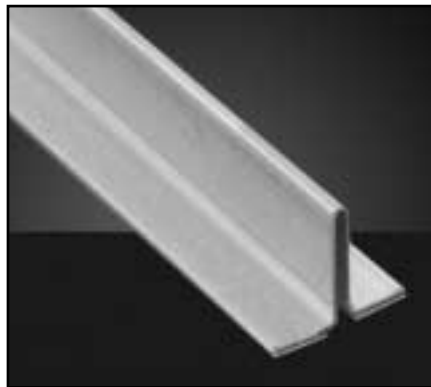
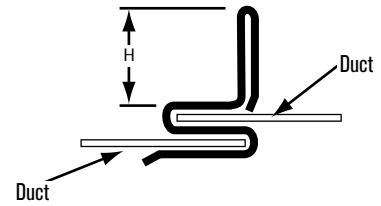
## Model QC Quick Connect

- Provides airtight connection for round duct
- 3" through 12" diameter
- One-bolt connection
- Tested to over 30" W.G. positive and negative



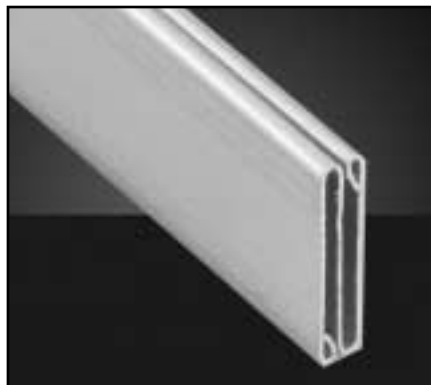
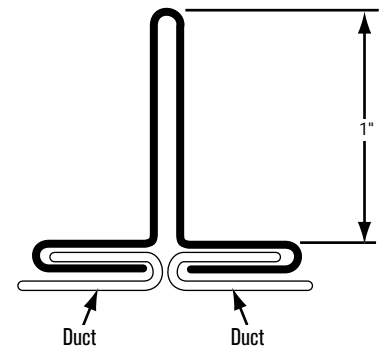
## Model STS Standing S

- Available in 20 ga, 22 ga, 24 ga and 26 ga
- 100' per bundle
- Used to connect ductwork segments
- Available in 1/2" and 1" heights



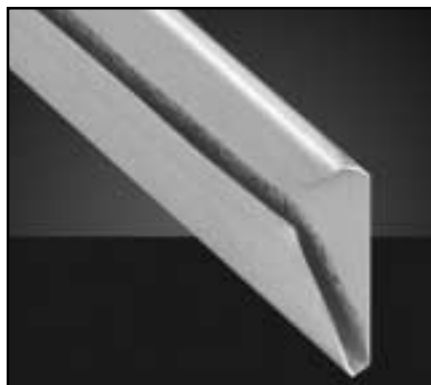
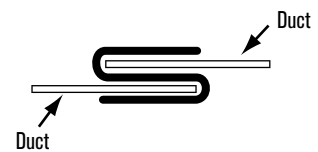
## Model STD Standing Drive

- Available in 22 ga, 24 ga, and 26 ga
- 100' per bundle
- Used to connect ductwork segments
- Available in 1" height only



## Model T6 Slip

- Available in 24 ga and 26 ga
- 100' per bundle
- Used to connect ductwork segments



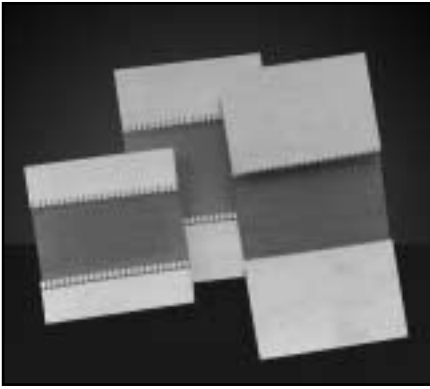
## Model T1 Drive

- Available in 20 ga, 22 ga, 24 ga, and 26 ga
- 100' per bundle
- Used to connect ductwork segments





# Duct Connectors



See submittal drawing #7071 for material choices and descriptions

## Model FC Flexible Connector

- Used where flexible connections of ductwork are required
- Minimizes vibration
- Provides airtight, weather and chemical-resistant connections
- Zipper style design
- 100' rolls

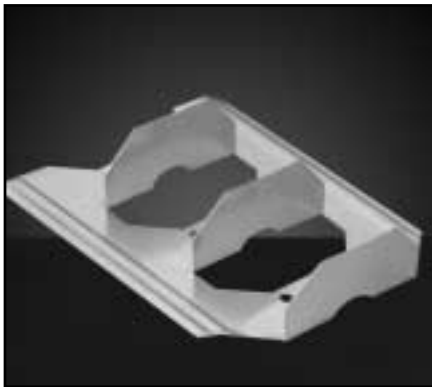
## Models Available

- FCCV (Commercial Vinyl)
- FCCVA (Commercial Vinyl Alum)
- FCCN (Commercial Neoprene)
- FCEV (Economical Vinyl)
- FCEN (Economical Neoprene)
- FCRV (Residential Vinyl)
- FCRN (Residential Neoprene)
- FCTV (TDC/TDF Vinyl)
- FCTVA (TDC/TDF Vinyl Alum)
- FCTN (TDC/TDF Neoprene)
- FCTNA (TDC/TDF Neoprene Alum)
- FCTNS (TDC/TDF Neoprene SS)



## Model VN Vane

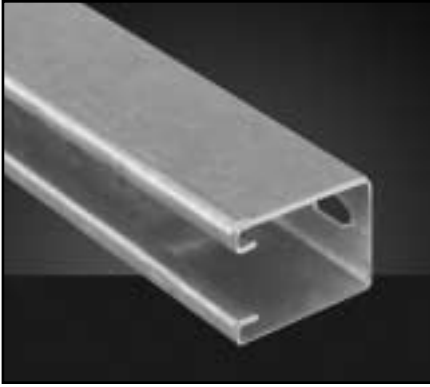
- Available in the following models:  
2", 4" and 4" acoustical
- Constructed from galvanized steel material
- 10' lengths
- Assembles quickly and easily to rail without screws or fasteners



## Model RA Rail

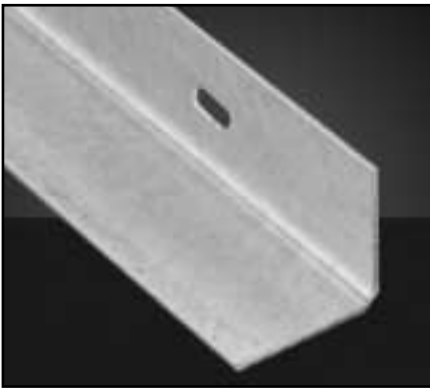
- Available in the following models:  
2" and 4" widths
- Constructed from galvanized steel material
- 10' lengths
- Assembles quickly and easily to vane without screws or fasteners
- Extra wide flange for easy mounting

# Hangers and Strapping



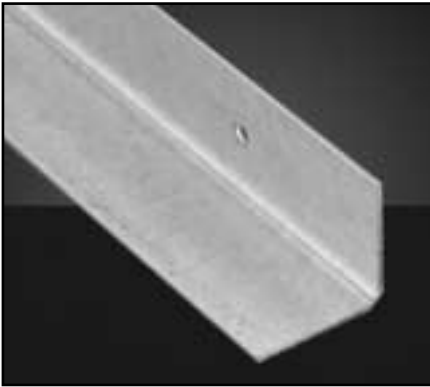
## Model TR Trapeze

- Used for hanging HVAC ductwork, as well as conduit and piping
- Available in 10' bundles
- Available in 16 ga and 18 ga
- Washers available



## Model SA Slotted Angle

- Used for stiffening ductwork or closing gaps at firewall penetrations
- Available in 1-1/2 x 1-1/2 in 14 ga, 16 ga and 18 ga
- Available in 2 x 2 in 14 ga, 16 ga and 18 ga
- Available in 2-1/2 x 2-1/2 in 14 ga, 16 ga and 18 ga



## Model PAG Punched Angle

- Used for stiffening ductwork or closing gaps at firewall penetrations
- Available in 1-1/2 x 1-1/2 in 14 ga, 16 ga and 18 ga
- Available in 2 x 2 in 14 ga, 16 ga and 18 ga
- Available in 2-1/2 x 2-1/2 in 14 ga, 16 ga and 18 ga



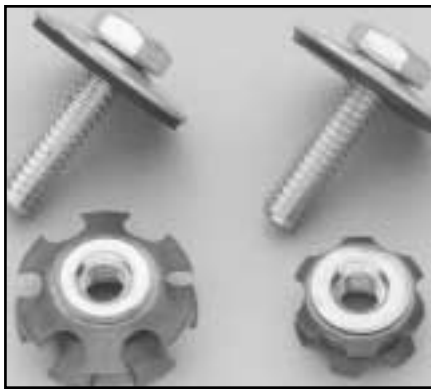
## Model HS Hanger Strap

- Available in 16, 18, 20, 22 and 24 ga.
- 1" width
- 200'/roll



## Model TRD Threaded Rod

- Available in 1/4" x 6', 10' and 12' lengths
- Available in 3/8" x 6', 10' and 12' lengths
- Available in 1/2" x 6', 10' and 12' lengths
- Available in 5/8" x 6', 10' and 12' lengths
- Available in 3/4" x 6', 10' and 12' lengths
- Available in 7/8" x 6', 10' and 12' lengths



## Model RDL Rod Lock

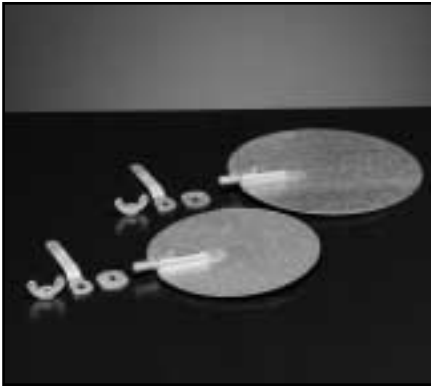
- Available in 1/2" and 3/4" sizes
- Used to reinforce duct
- Pull tested to over 1900 lbs.
- Sold with bolt and washer



## Model TKS Tek Screws

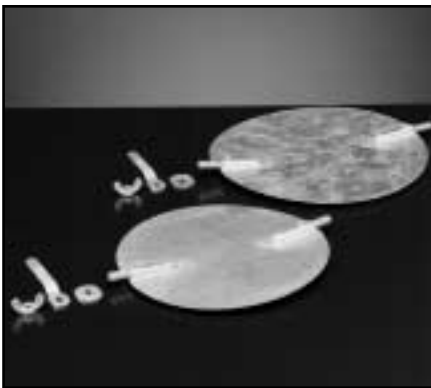
- #8 x 3/4" long sheet metal screw
- 7,500 pcs/box

# Damper / Regulator Accessories



## Model 65 & 66 Damper

- For use in 5" to 6" round pipe
- Furnished with handle, washer and wing nut
- Has one bearing
- Unassembled



## Model 607/608 Damper

- Two bearings
- For use in 7" to 8" round pipe
- Furnished with handle, washer and wing nut
- Unassembled



## Model 506/507/508 Damper

- Steel Warm Air Damper
- 6", 7" and 8" sizes
- Spindle is reversible and may be inserted from either end
- The heavy spring holds damper securely under most conditions



## Regulator Sets

- 60 - 3/8" Regulator
- 56 - 3/8" Square Shank Bearing
- 80 - 3/8" Dial Regulator set for large dampers

Furnished with two solid bearings, six rivets and three sheet metal screws. Dial regulator, inner disc, handle, bolt and wing nut assembled and packaged individually. Inner disc prevents air leakage.



## Model 69 Regulator Set

- 704 Washer
- 705 Handle
- 706 Wing Nut
- 708 (one) 5/16" Bearing

69 regulator sets are furnished with retractable bolt bearing for fast, easy assembly. Merely slip bearing over edge of damper at the bearing line, lay the bearing on any firm surface and drive the prong through the damper. The prong firmly clinches the bearing to the damper. 5/16" bearings are ample for most damper installations. Maximum damper thickness: .022, 22 gauge galv.



## Model 70 Regulator Set

- 704 Washer
- 705 Handle
- 706 Wing Nut
- 708 (two) 5/16" Bearings

70 regulator sets are furnished with retractable bolt bearing for fast, easy assembly. Merely slip bearing over edge of damper at the bearing line, lay the bearing on any firm surface, and drive the prong through the damper. The prong firmly clinches the bearing to the damper. 5/16" bearings are ample for most damper installations. Maximum damper thickness: .022, 22 gauge galv.



## Model 102 Damper Tip

- Fixed bearing
- Has same fastening features as No. 708 retractable bolt bearing



## Model 2 Casing Clip

- For fastening casings and drawbands
- 14-gauge steel



## Model 27 Casing Clip

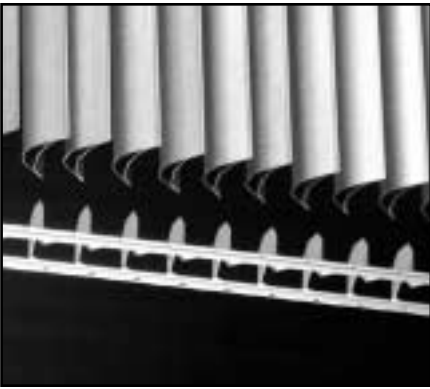
- For fastening casings and drawbands
- 16-gauge steel

# Miscellaneous



## Model AD Aluminum Opposed-Blade Damper

- Aluminum construction
- Opposed-blade damper
- Controls the air volume from full flow to shut-off



## Ducturns

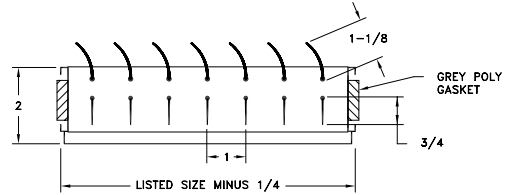
- Nonadjustable
- Furnished in 8-foot lengths
- Blade spacing approximately 1.4" or 8-1/2 blades/foot
- Galvanized steel



## Model DT Air Diverter

- All-aluminum construction
- Two sets of individually adjustable blades
- Equalizes flow and controls volume at collar take-offs to registers and grilles
- Equipped with gasket around outside of frame for positioning firmly in duct

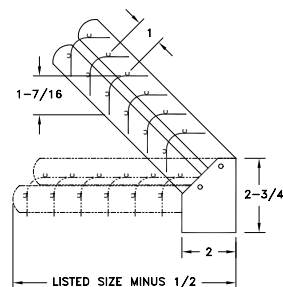
DT Available Sizes (in.)
Minimum: 6" x 4"
Maximum: 20" x 36"



## Model FT Flexiturn

- All-aluminum construction
- Designed to pick up air from the main trunk at branch take-offs and divert it toward the grille
- Mounts easily with sheet metal screws
- Gang-operated blades move from 45 degrees open to fully closed
- Positive setting

FT Flexiturn Available Sizes (in.)
Minimum: 6" x 4"
Maximum: 18" x 30"

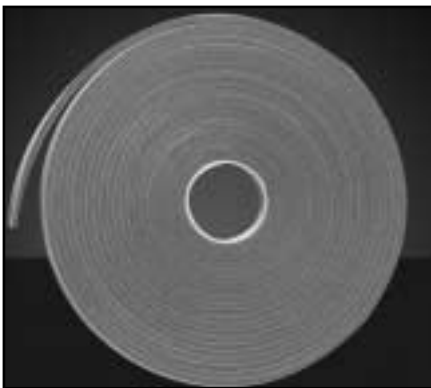






## Model BUGA Gaskets

- Butyl Gasket
- Provides moisture and vapor-tight seal
- UL approved
- 30' rolls, 780'/case



## Model NEGA Gaskets

- Neoprene Gasket
- Provides moisture and vapor-tight seal
- UL approved
- 50' rolls, 750'/case



## Sealants

- Water-based and solvent-based
- Available in tube, 1 gallon, 5-gallon pail, and 55-gallon drums
- Forms a flexible, yet durable seal against air leakage

## Adhesives

- Roller type available in 5-gallon pail
- Spray type available in 55-gallon drum
- Silicon available in 11-ounce tube
- Used for bonding fiberglass and mineral wool duct liner to galvanized steel

## Models Available

### Sealants

- SS Solvent-based Sealant
- SSF Water-based Sealant
- SSNF Water-based, Nonfiber Sealant
- BUS Butyl Sealant

### Adhesives

- ADR Roller Type Adhesive
- ADS Spray Type Adhesive
- SL Silicon Adhesive



**Hart & Cooley**

*install confidence*

Hart & Cooley, Inc.  
500 East Eighth Street  
Holland, MI 49423  
info@hartcool.com  
www.hartandcooley.com

800.433.6341 *toll-free*  
616.392.7855 *phone*  
800.223.8461 *toll-free fax*  
616.392.7971 *fax*

Offered by:

**[www.hartandcooley.com](http://www.hartandcooley.com)**

For submittal information and other literature visit our Website.

Printed in U.S.A.

Form No. 851095 10M 03/2004

©2004 Hart & Cooley, Inc.